



Angel Real Estate

# ANGEL REAL ESTATE GROUP

"SELL THE WORLD TO THE WORLD  
SERVICE THE WORLD TO THE WORLD"



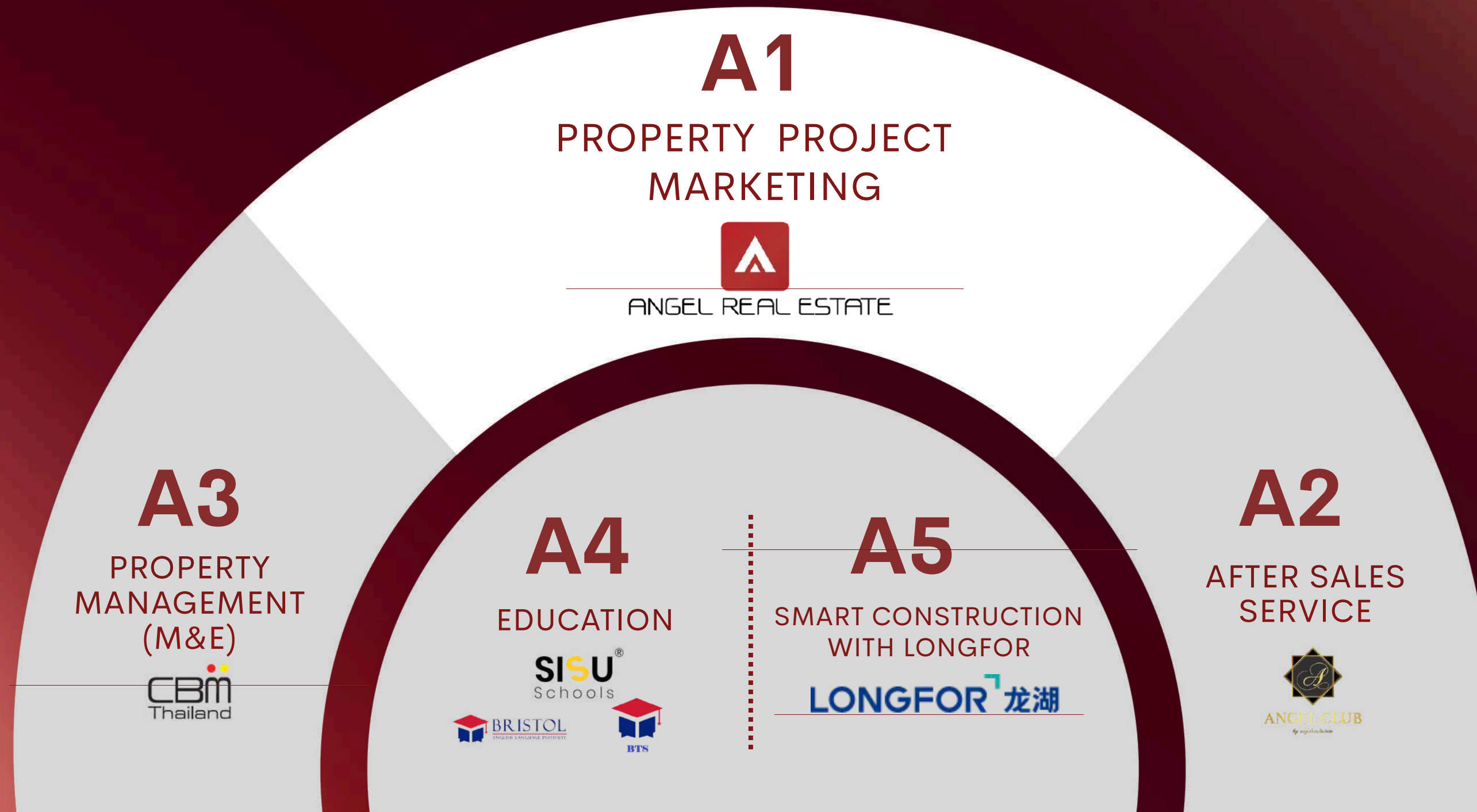


Angel Real Estate



# ANGEL REAL ESTATE – 360° SOLUTIONS FOR DEVELOPERS

ANGEL REAL ESTATE BRINGS OVER 12 YEARS OF PROFESSIONAL EXPERIENCE AND SPECIALIZED EXPERTISE IN THE REAL ESTATE MARKET.





Angel Real Estate

# ANGEL REAL ESTATE – 360° SOLUTIONS FOR DEVELOPERS

## PROPERTY PROJECT MARKETING



ANGEL REAL ESTATE

- Project Marketing for Residential Housing and Condominium
- Industrial Land & Factory Advisory (EEC Zone)
- Land Acquisition Advisory
- Commercial Building for Rent and Marketing

A1

## AFTER SALES SERVICE



- Property Management Service
- Rental Service
- Elite Visa and Visas
- Cleaning Service
- Furniture Renovation
- Vehicle pick-up and drop-off

A2

## PROPERTY MANAGEMENT(M&E)



- Property Management
- Engineering(M&E)
- Green consultancy
- Cleaning Service
- Integrated Facilities Management
- Management Agent
- Sanitizing Service
- Sales Agent & Butler Service
- Project Management
- Security Service
- Pest Control Service
- Fireman service
- Training service

A3

## EDUCATION



- SISU international school Finland-British Education
- Bristol language School English (Pearson UK) Education
- Bristol Trilingual School

A4

## SMART CONSTRUCTION WITH LONGFOR



- Digital Twin Platform
- Digital Operation Platform
- Project Management Platform

A5



ANGEL REAL ESTATE

# A1

## PROPERTY SALES AND MARKETING



## A1 PROPERTY SALES AND MARKETING



NUMBER OF PROJECTS **109**

UNITS SOLD **12,800**

SOLD VALUE (MB THB) **88,000**

**11 SALES TEAMS | 120 TEAM MEMBERS**

Here prime locations meet quality developments  
premium condominium, housing & building projects in  
**Bangkok | Chiang Mai | Phuket | Samui | Hua Hin | Dubai**





# PROJECT SALES & MARKETING

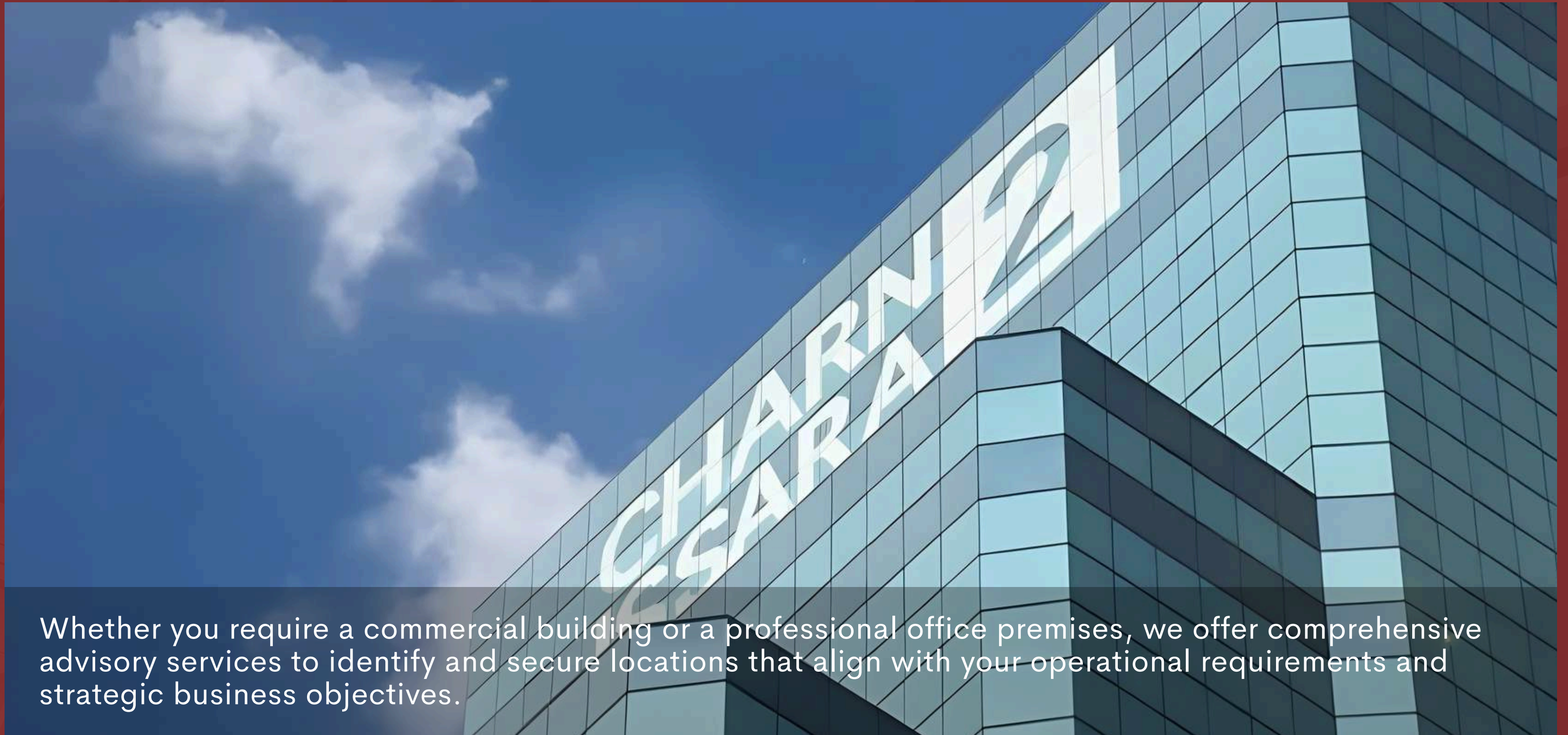
We deliver end-to-end, one-stop property agency services, combining strategic marketing, professional sales execution, and market-driven insights to maximize project value and sales success.



**A1** PROPERTY SALES AND MARKETING



# COMMERCIAL BUILDING FOR RENT AND MARKETING



Whether you require a commercial building or a professional office premises, we offer comprehensive advisory services to identify and secure locations that align with your operational requirements and strategic business objectives.



# INDUSTRIAL LAND & FACTORY ADVISORY (EEC ZONE)

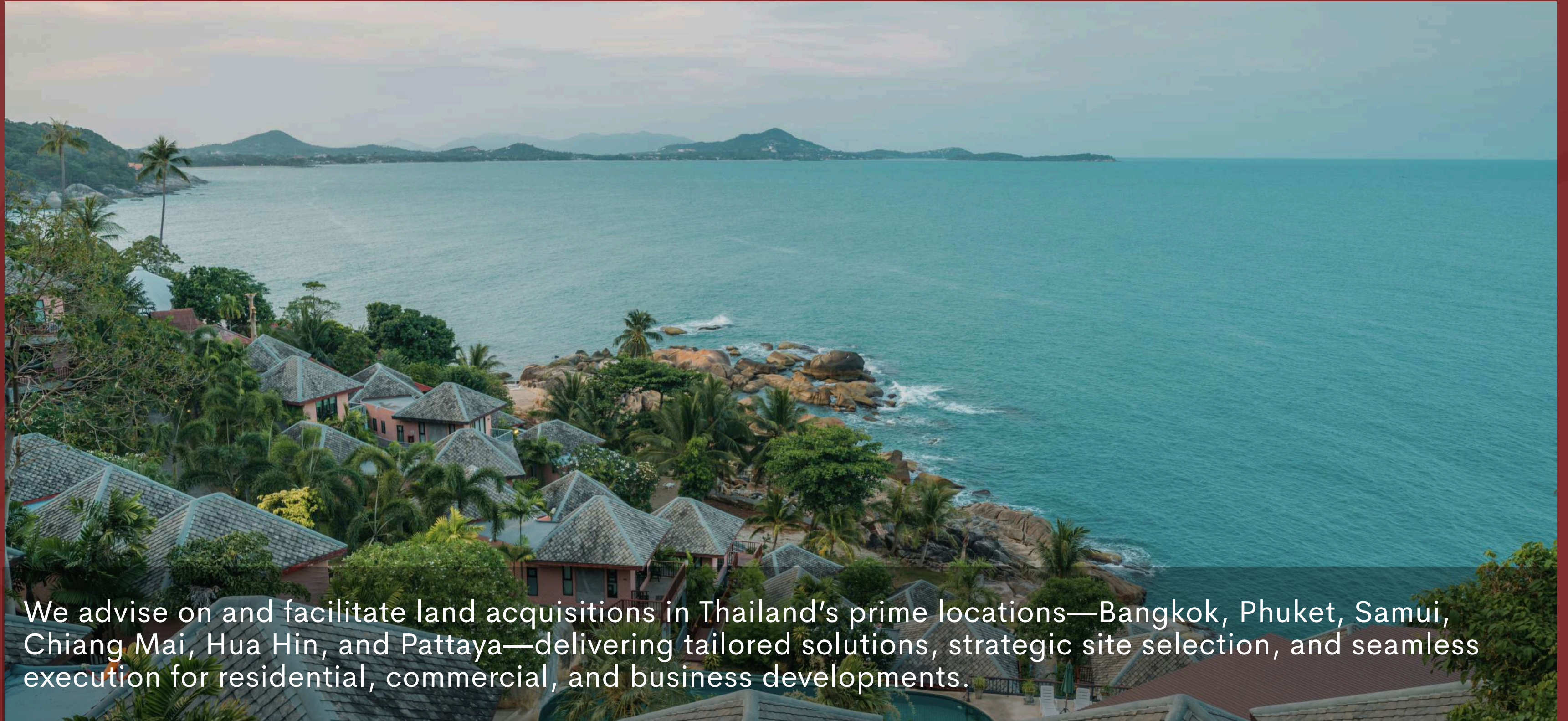


We advise on and execute transactions for industrial land and factory developments in the EEC zone, delivering strategic insights and tailored solutions to support large-scale manufacturing, logistics, and long-term business expansion.





# LAND IN PRIME LOCATIONS ACROSS THAILAND



We advise on and facilitate land acquisitions in Thailand's prime locations—Bangkok, Phuket, Samui, Chiang Mai, Hua Hin, and Pattaya—delivering tailored solutions, strategic site selection, and seamless execution for residential, commercial, and business developments.



# ANGEL REAL ESTATE

## *OUR DEVELOPER COORDINATOR*

SUPALAI

 LAND & HOUSES

PROPERTY PERFECT

 SIAMESE ASSET  
ASSET OF LIFE

 SANSIRI

  
ORNSIRIN

SC ASSET

 CHARN  
ISSARA

  
NORTHLAND

 ANANDA

 Nirvana

 SENA  
DEVELOPMENT

 DAP  
YAPI  
DOĞRU ALANDA PROJELER

**RISLAND**

**FYN**  
DEVELOPMENT

 LPN  
Development Group

 CHEWATHAI PLC.  
BUILD A LIFE

 ALTITUDE

GRANDE ASSET  
HOTELS & PROPERTY

 AP



# A2



## AFTER SALES SERVICE

■ Property Management Services

■ Cleaning Services

■ Elite Visa and Visas

■ Rental Services

■ Furniture Renovation

■ Vehicle pick-up and drop-off



## A2 AFTER SALES SERVICE

### PROPERTY MANAGEMENT SERVICES

We offer comprehensive, professional property management with the highest standards to protect your asset and ensure peace of mind.

Our experienced team handles all day-to-day operations—including utility bills, common fees, routine inspections, and building coordination—efficiently and transparently. We treat your property as our own for truly stress-free ownership.



### RENTAL SERVICES

Find the right tenant with confidence. We provide end-to-end rental services for houses and condominiums, from marketing and tenant screening to contract coordination and move-in support. Our experienced team ensures a smooth, secure, and efficient leasing process, giving property owners peace of mind and reliable rental returns.



### CLEANING SERVICES

We provide professional cleaning services for houses and condominiums, covering routine cleaning, deep cleaning, and pre-move-in or move-out preparation. Our team ensures every space is thoroughly cleaned to high standards.





## A2 AFTER SALES SERVICE

### FURNITURE PROCUREMENT AND RENOVATION SERVICES

From concept to completion, we deliver bespoke furniture procurement and renovation services tailored to your property. Our team ensures refined craftsmanship, premium materials, and thoughtful design that enhance functionality, elevate aesthetics, and create lasting long-term value.



### ELITE VISA AND VISAS

Seamless visa solutions for long-term living in Thailand. We specialize in Thailand Elite Visa and Visas services, providing personalized guidance, accurate documentation, and professional handling to ensure a smooth and successful application experience.



### VEHICLE PICK-UP AND DROP-OFF SERVICES

We offer private transfer services from the airport to your destination ensuring a smooth, safe, and comfortable journey. Our well-trained, professional drivers are dedicated to providing attentive service, whether you are in Bangkok, Chiang Mai, or Phuket. Wherever your destination may be, we are committed to serving you with reliability, comfort, and excellence.





# A3

## PROPERTY MANAGEMENT(M&E)



### A3 PROPERTY MANAGEMENT(M&E)

- Property Management
- Engineering(M&E)
- Green Consultancy
- Cleaning Services
- Project Management
- Security Sevices
- Pest Control Services
- Fireman Services
- Integrated Facilities Management
- Management Agent
- Sanitizing Services
- Sales Agent & Butler Services
- Training services





# CBM THAILAND CLIENTS





# A4

## EDUCATION



■ SISU International School

■ Bristol International School

■ Bristol Trilingual School



SISU  
SCHOOL  
BANGKOK

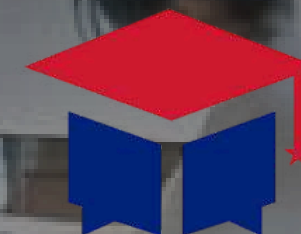
Location: Bangna, Thailand

# SISU INTERNATIONAL SCHOOL

SISU International School is a Finnish-based school following the world-renowned Finnish education system. Known for its child-centered approach, strong academic foundation, and emphasis on well-being, SISU nurtures confident, creative, and independent learners in a supportive learning environment.



**A4 EDUCATION**



**BRISTOL**  
ENGLISH LANGUAGE INSTITUTE

Location: Chiang Mai, Thailand

# BRISTOL INTERNATIONAL SCHOOL

Bristol International School will be based in Chiang Mai, evolving from a language school into a full international school. The school will offer a strong academic foundation with an international curriculum, designed to support global learning, language development, and student growth in a supportive and future-focused environment.





Location: Bang Kapi, Thailand

# BRISTOL TRILINGUAL SCHOOL

Bristol Trilingual School will be located in Bangkok, offering a trilingual curriculum in Thai, English, Myanmar, and Chinese. The school focuses on language excellence, cultural understanding, and strong academic foundations to prepare students for a global future.



A5

LONGFOR 龙湖

SMART CONSTRUCTION  
WITH LONGFOR



# DIGITAL TWIN

Digital Infrastructure  
Constructinng Smart Cities  
with Longfor Intelligence

International Invention  
Patent Application

Patent Application

Software Copyright

Chinese Patent  
Application

National High-tech  
Enterprise

National Specialized &  
Sophisticated Enterprises



## Digital Twin Platform

- Smart Construction
- Smart Project Site
- Smart Commercial
- Smart Apartment
- Smart Community

## Digital Operation Platform

- Spatial Operation
- Spatial Service
- Spatial Development

Proprietary Digital Products	Proprietary Code	Alot intelligent Scenarios	Intelligent Robot Assistants
Intelligent Hardware Devices	Cloud Servers	Daily Data Volume	



# END-TO-END REAL ESTATE EMPOWERMENT

## Design Optimization & Planning

---

Maximize saleable area and optimize structural design from an investor's perspective to minimize unnecessary costs at the source.

## China Supply Chain Advantage

---

Leverage large-scale centralized procurement to provide direct access to China's top-tier building materials and furniture at factory prices.

## Construction Management Consulting

---

Implement Longfor's proven standardized management system to ensure precise schedule control and premium build quality.

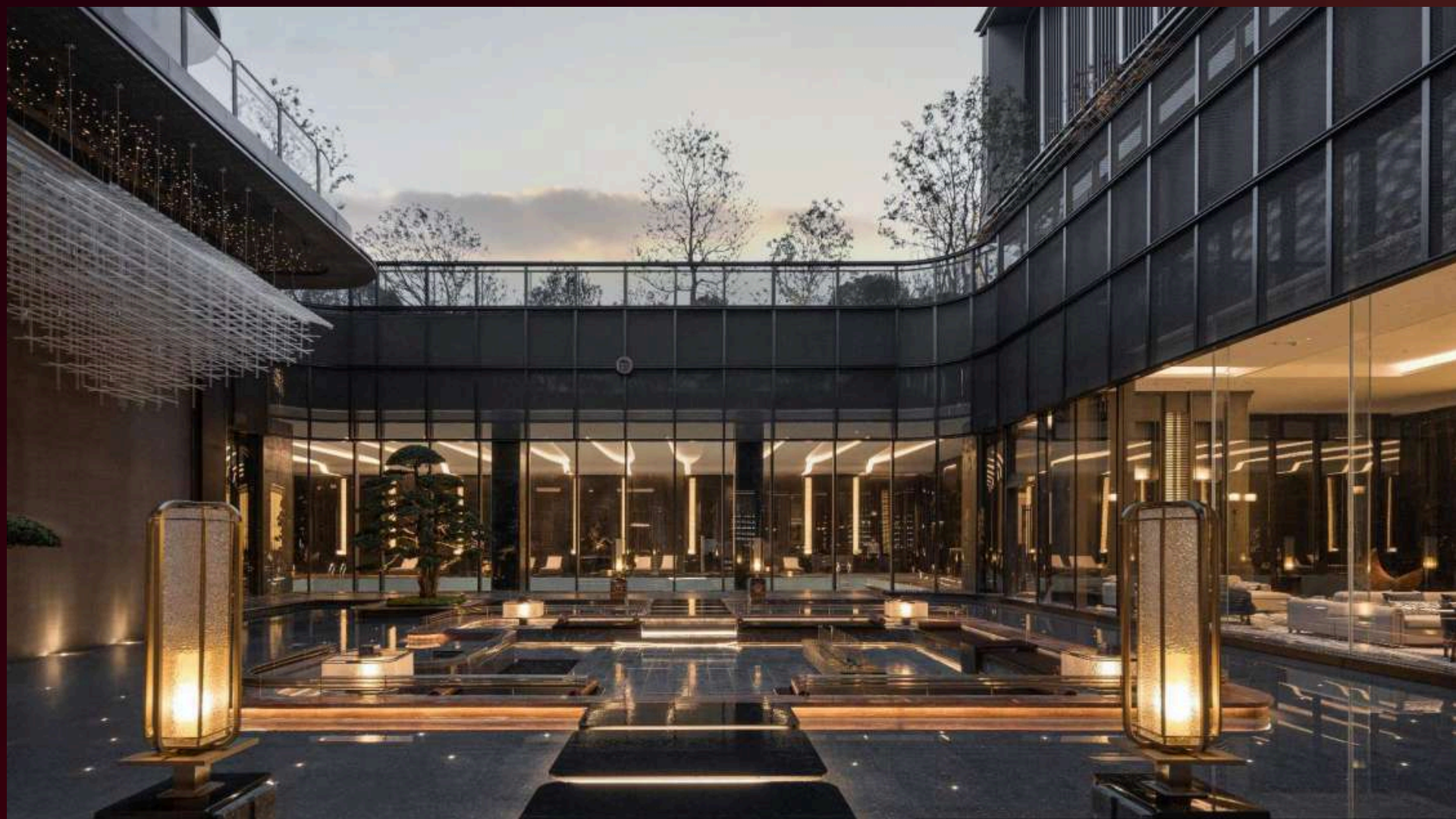
## Core Value: Efficiency & Cost-Saving

---

Shorten development cycles, slash procurement expenses, and enhance project market value through professional expertise.

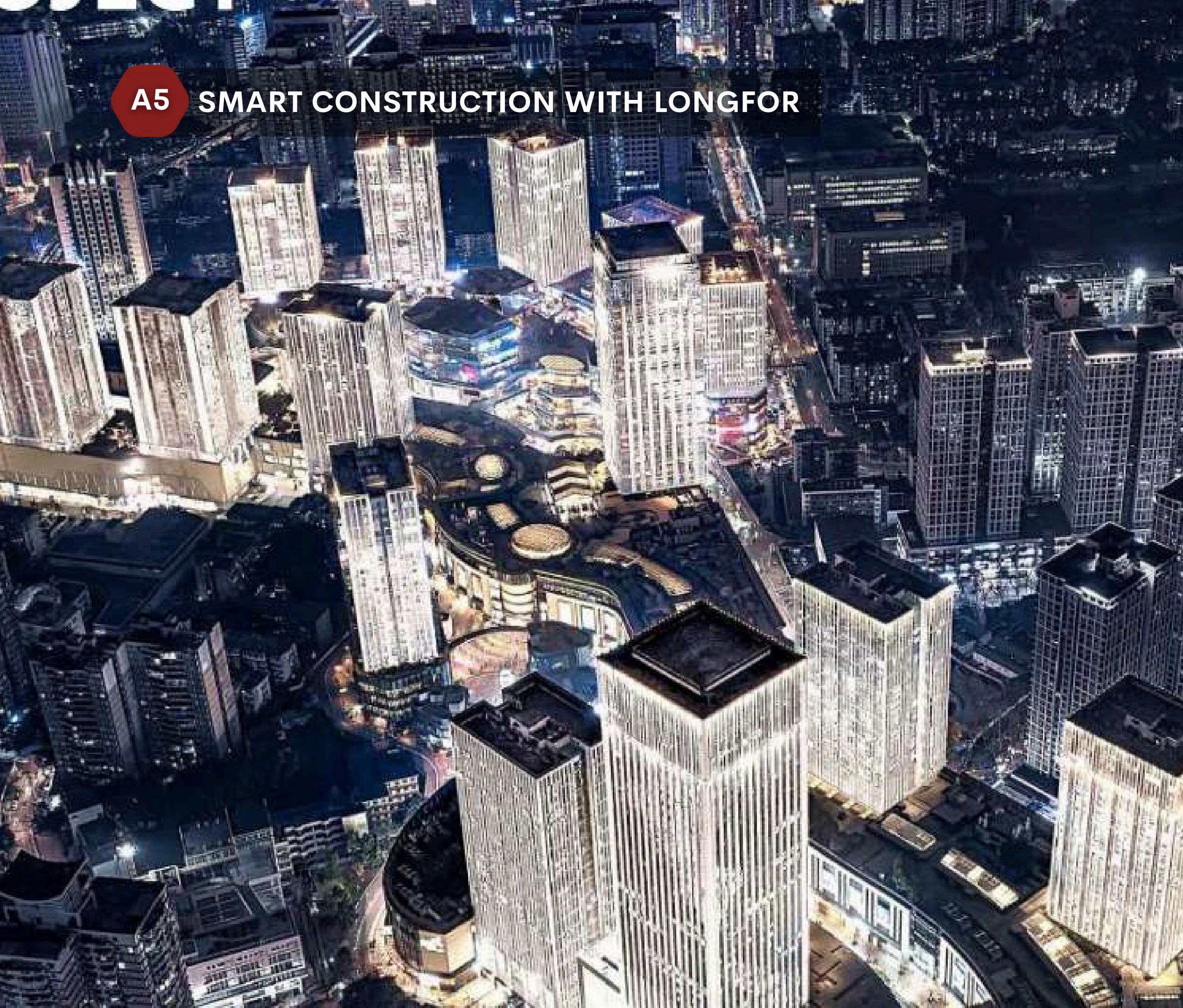


## A5 SMART CONSTRUCTION WITH LONGFOR





**A5 SMART CONSTRUCTION WITH LONGFOR**







ANGEL REAL ESTATE



**THANK YOU**